

**YOUR NAME**

Start the trail at the grey arrow  
 Follow the numbers from 1-12

**1 FONT**

The font is used for baptising or christening when someone becomes a member of the Church.



What do you think is put in it for this ceremony?

W \_ T \_ \_

**2 WALL MEMORIAL to Agatha Barlow**

What year did Agatha Barlow die?

— — — —

How many children did she have ?

How many daughters did she have?

How many sons did she have ?



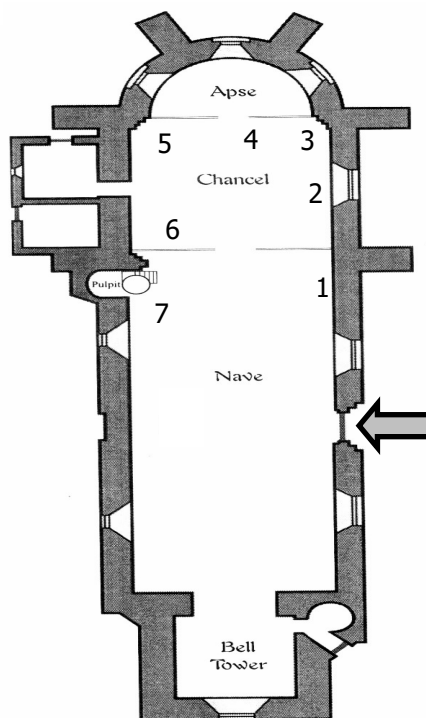
**4 ALTAR**

This is a holy Table.

Behind the Altar there is some wooden panelling. Can you find a cockerel carved on the panelling. You might have to look very carefully.

Tick the box when you have found it.

**EAST**



**WEST**

**3 PISCINA**

This unusual and colourful recess is a Piscina.

The Piscina has basins set in the wall. What might they be used for?

\_\_\_\_\_

\_\_\_\_\_

What is drawn inside each basin?

A C \_ \_ \_ \_



**5 AUMBRY**

On the wall opposite the Piscina is an Aumbry. It is a small recess in the wall.

It is a sort of

C \_ P \_ \_ \_ \_ D

How many arches does it have?

What colours are on the arches?

\_\_\_\_\_

\_\_\_\_\_

\_\_\_\_\_



**6 TILES**

Look at the colourful tiles. Draw your favourite pattern.

**7 PULPIT**

The Priest stands in the Pulpit to speak to the Congregation. Why do you think it is so high?

\_\_\_\_\_

\_\_\_\_\_

There is a reading desk attached to the front. What do the words say?

H \_ \_ \_ E

— — —

\_ \_ \_ D \_ F

\_ \_ \_ L \_ \_ D



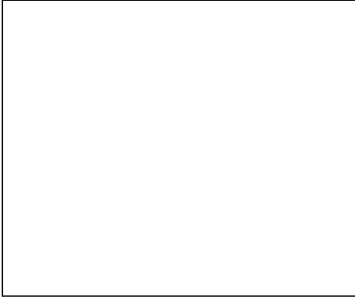
### 8 STAVES

The poles are called Staves and are carried by the Churchwardens on special occasions.

Each stave has a shape on top. What are these shapes made of?

B \_ \_ \_ \_

Draw one of the shapes.



### 9 WAR MEMORIAL

Look at the beautiful picture. It is a mosaic of tiny pieces of coloured stone and glass called an Opus Sectile.

This memorial remembers the men of Easton who died in the Great War of

19 \_ \_ to 19 \_ \_



What is the name of the Saint on this memorial?

---



---

### 10 WINDOWS

Now look up at the coloured stained glass windows on the wall above. One is dedicated to St Stephen and one to the Virgin Mary.

What is above St Stephen's head?

What is St Mary holding in her hand?



### 11 BELL TOWER

How many bells does the Church have? Count the bell ropes for the answer.



Think of some occasions when the bells might be rung.

---

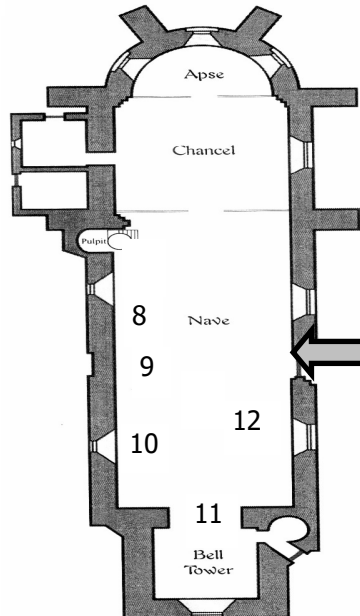


---

How many birds can you find in the stained glass window?



### EAST



### 12 KNEELERS

Find the red kneelers in the Nave. They were made to remember a special event.

What was it?

What does E I I R mean?



### 13 THINK ABOUT YOUR VISIT

What did you like best about your visit?



As you leave the church look at the wonderful zig zag stone carving around the door. It is very old and dates from the 12th century.

Now look at the sundial high up on the wall.

See if you can find the numbers on the sun dial and if the sun is shining you might be able to tell the time.





**Children's Answers are in bold** Further information for interest and discussion



St Mary's is probably the earliest of the Norman Churches in the Itchen Valley and the largest, dating from the twelfth century. The south doorway and chancel are Norman while the twelfth century windows in the north wall were reglazed in the early 1900s when there was a major refurbishment.

### 1 FONT

The font is filled with **water** for baptising people when they become members of the Church. The nineteenth century square shaped font is made from limestone. It is supported by a thick central stem and rests on four outside barley-twist columns with palm tree capitals. There are different Romanesque style decorations on each of the four sides – half cartwheels, triangles, chevrons and Maltese crosses.

### 2 MEMORIAL

The memorial is dedicated to Agatha Barlow who died in **1595** aged 90 and is buried in this church. She had **7** children, **2** sons, William and John and **5** daughters, Margarite, Anne, Elizabeth, Frances and Antonine who all married Bishops, Coventry & Litchfield, Hereford, Winchester, Durham and Winchester again. Agatha's husband William Barlow was banished during the reign of Mary Tudor for refusing to return to Catholicism and returned in the reign of Elizabeth to become Bishop of Chichester. There is a shield above the monument with the date of her death.



### 3 PISCINA



The piscina has two basins and was used for ritual **washing**. One basin was used by the priest for washing his hands and the other for washing up communion vessels. Inside each of the shallow bowls is a roughly marked **cross**. The cavity and the basins are 12th century but the surroundings are 19th century refurbishment.

### 4 ALTAR

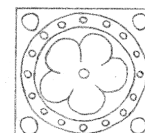
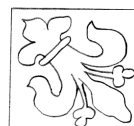
The altar is the focal point of the Church. It is also known as the communion table. This altar is made of oak and was carved by a local craftsman in 1869. The carvings on the panelling behind the altar depict the symbols of the Passion of Christ. The cockerel is on the last panel on the right. Before he was crucified, Jesus told his Disciples at the Last Supper that Peter would deny knowing him three times before the Cock crowed. And so it was that when interrogated by the High Priest Peter said he didn't know Jesus and then the Cock crowed and Peter wept.

### 5 AUMBRY

An aumbry is a recess in the wall of the church chiefly used for housing sacred vessels. It is a sort of **cupboard**. An aumbry was often used for keeping the reserved sacrament for taking to the sick and housebound members of the parish. However, as there is no door on this aumbry that seems to have been unlikely here. The external face is divided into **3 arches** elaborately painted in **red, green and black**.

### 6 TILES

The floor tiles in the Sanctuary and Chancel are Victorian in shades of terracotta, ochre, black, white and green, decorated with fleur-de-lys, roses and flowers and leaves



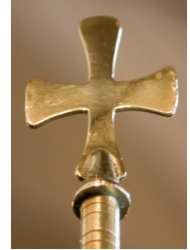
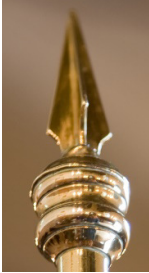
## 7 PULPIT

The pulpit is high so that the speaker **can be seen and heard** more easily, especially when delivering a sermon or reading from the Holy Bible. The carvings are 17<sup>th</sup> century and the words on the reading desk are **HEARE THE WORD OF THE LORD**. Notice the old fashioned spelling.



## 8 STAVES

The staves are carried by the churchwardens on special occasions especially when accompanying a visiting Bishop. Churchwardens were responsible for the behaviour of the congregation in the church and churchyard and were able to arrest anyone who misbehaved. The sharp end of the staff may have been used to keep people awake during the service and sermons! The tops are made of **brass**. One is in the shape of a spearhead and the other a cross. Nowadays the churchwardens are responsible for the general management of the Church.



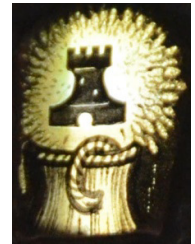
## 9 WAR MEMORIAL



The opus sectile depicts **St George** who is the patron saint of England. The memorial is dedicated to the men of Easton who died in the Great War **1914-1918**. It was made by Powell and Sons, Whitefriars Ltd who made similar memorials in churches and public places throughout the country.

## 10 WINDOWS

One is dedicated to St Stephen and the other to the Virgin Mary. St Stephen is depicted in the left hand window and has a **crown** above his head. The Virgin Mary is holding a long stemmed white **lily** which is a symbol of purity. These windows were made in 1909 by Charles Kempe, a well-known artist and window maker whose trademark, a black tower over a yellow wheatsheaf can be seen in the bottom left hand corner of the window to St Stephen.



## 11 BELL TOWER

There are six bell ropes suspended from the ceiling in the bell tower showing that there are **6** bells. The Bell Tower was built in the late Norman period. The bells are rung before **services**, and on special occasions such as a **wedding, Easter** and **Christmas**. There are **3 doves** in the window. The window represents Mary and Joseph presenting Jesus to Simeon in the Temple and the baptism of Christ. The descending dove at the top of the window represents the Holy Spirit. The 2 doves in the basket would be an offering.



## 12 KNEELERS

There are 12 red kneelers made by the ladies of the parish to celebrate Queen Elizabeth II's **Silver Jubilee** in 1977. E II R stands for **Elizabeth Regina the Second** or **Queen Elizabeth the Second**. Regina means 'Queen'.