

YOUR NAME

Start the trail at the grey arrow
Follow the numbers from 1-14.

1 FONT

A font is where baptisms (christenings) take place.
Which two creatures can you see on the font?

What do you think the boat is?

N _____ A _____

Find another font in the Church.
Mark the plan with F.



2 PULPIT

The pulpit is used by the priest for sermons or talks.
How many steps does it have? _____
Why do you think it is so high? _____

There are three figures carved on the pulpit. Draw
arrows to show what each of them is holding.

- | | |
|---------------------|--------|
| St. Peter (Petrus) | Keys |
| St. John (Iohanus) | Book |
| St. James (Iacobus) | Scroll |

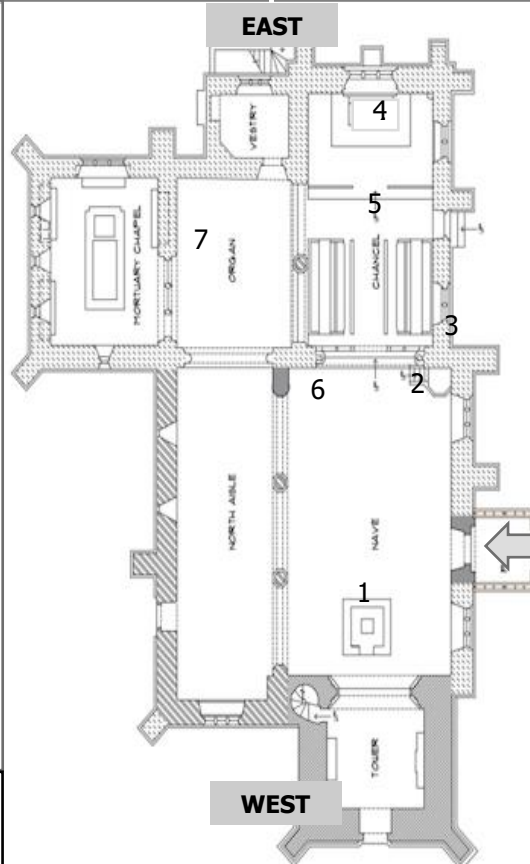
3 PULPIT WINDOWS

Our Church is lucky enough to
have several windows made by
Charles Eamer Kempe and his
studio.

The saints in this window are
(tick the boxes)

- | | |
|--------------------------------------|--------------------------------------|
| <input type="checkbox"/> St. Matthew | <input type="checkbox"/> St. Mark |
| <input type="checkbox"/> St. Hubert | <input type="checkbox"/> St. Luke |
| <input type="checkbox"/> St. John | <input type="checkbox"/> St. Francis |

What is the name of the knight
mentioned in the first window
on the right hand side in the
Chancel ?



4 ALTAR

The altar is a table ; it is where
the priest leads worship. Look
at the cloth covering the front
of the altar. The cloth is called
a frontal. What colour is it
today?

Behind the altar is a beautiful
carved screen called a reredos.
What is written on it ?

G _____

I H S

C _____

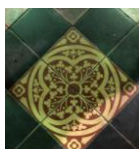
What do you think
the cross on the
altar is made of?



5 TILES

The floor tiles are encaustic tiles
made by Minton. Encaustic
means that it is made using
different colours of clay,
rather than a glaze.

How many different colours
can you see ?



6 EAGLE

Where is there an eagle in the Church?

Mark where it is on the
plan with an E.



7 ORGAN

How many pipes can you
count?

The organ has been moved
twice. In 1920 in memory of

And in memory of Jonathan
Wells in which year?

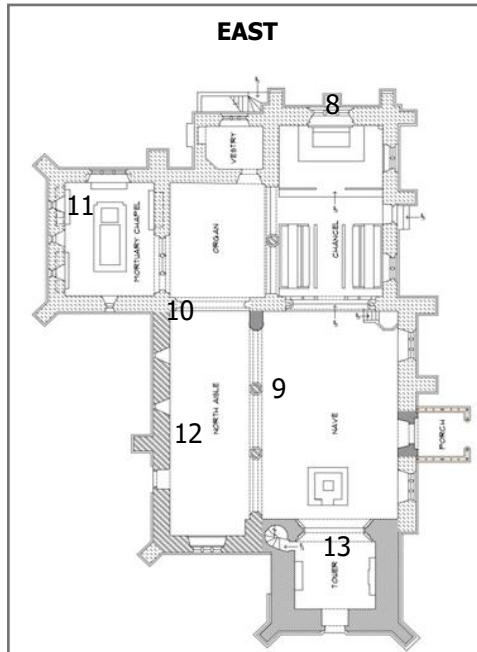
8 EAST WINDOW behind altar

This is another window made by Charles Eamer Kempe. Find the wheat sheaf which is his signature.



Now look back at the pulpit windows ; what can you see in the bottom left-hand corner of each of them ?

From what bird do you think the feathers of the angel wings might have come ?



9 PILLARS AND ARCHES

Walk in to the centre of the Church and look around. Are the pillars all the same shape ? ____

What shape are they?



10 ANGEL

Until it was brought inside to protect it from the weather, this angel used to stand on the grave of Bertha Mary Gray who died, aged 5, from diphtheria. This is a disease against which most people in England are now protected by vaccination.



What do you think the angel is holding ?

11 MORTUARY CHAPEL

A mortuary chapel is where people are buried. This chapel is for members of the Somers Cocks family, who built Eastnor castle and paid for most of the rebuilding of the church in Victorian times about 150 years ago. The large tomb in the centre of the chapel is for Charles Somers Cocks. In what year was he born?

When did he die? _____

How old was he when he died? _____

12 WAR MEMORIAL

This commemorates those who died in the First World (or Great) War and the Second World War. What are the dates for the First World War? _____
Second World War? _____

How many men from the parish of Eastnor died in the First World War? _____

Second World War? _____

Talk about what you notice in the list of names.

13 TOWER

This is where the bell ringers ring the church bells. How many ropes can you see? _____

Why do you think they have a fluffy part? _____

On 30th March 2016 a peal of 5 ___ ___ ___
Plain Bob Minor was rung
How long did it take?



14 MY WINDOW

Who would you commemorate in a stained glass window ?

Draw the window you would make for them and explain why.

When you leave the Church you may like to see the bench that was designed by Lady Henry Somerset, the elder daughter of Charles Somers Cocks whose tomb you saw in the mortuary chapel.





Welcome

It is not known when St. John the Baptist Church, Eastnor was built but the tower is believed to be 12th, 13th. and 14th Century. The rest of the Church was rebuilt in 1851-2 by Sir George Gilbert Scott who also designed the Grand Midland Hotel at St. Pancras Railway Station and the Albert Memorial in London.

1 FONT

There is a **lamb** and a **pelican with her chicks**.

The boat is **Noah's Ark**. Did you notice the storm clouds ?

Baptism is the way people become members of the Church and a font is often near the entrance of a church because people being baptised are at the start of their spiritual journeys. At baptism water from the font is sprinkled on the forehead to signify the washing away of sins. This font was designed by George Gilbert Scott and was given by the Village to celebrate the new building.

The other font is **near to the Mortuary Chapel**. It is very old and was found under the floor when the church was rebuilt.



2 PULPIT

There are **5** steps.

It is high so that the priest is able to be heard and seen from all over the Church.

St. Peter (petrus) → **keys**

St. John (Iohanus) → **book**

St. James (Iacobus) → **scroll**



3 PULPIT WINDOWS

These two windows were donated in memory of Reginald Somers Cocks M.C. and Nigel Drummond. When you visit the Mortuary Chapel notice the wooden cross which marked Reginald Somers Cocks' grave in Belgium where he died in the First World War. The other Saints on this window are

St. Hubert St. Luke St. George St. John St. Francis St. Mark

It is **Sir Galahad**. In legend he is considered to be the most pure and noble of the knight of the Round Table.

4 ALTAR

The cloth is purple at advent : 4 weeks before Christmas and lent, 40 days before Easter; white at festivals associated with Jesus, that is Christmas and Easter; Red for Palm Sunday and Pentecost and green at other times. On the reredos is written **GLORIA**, which means Glory to God ; **IHS**, the sacred monogram, which is an abbreviation of the Greek word IESOUS for Jesus. This also appears on the font ; **CARITAS**, which means love for all.

The cross is made of **wood** and the detail is called marquetry. It was a memorial made by a gifted craftsman who had been a prisoner of war in Eastnor

5 TILES

There are **three** different colours of clay.

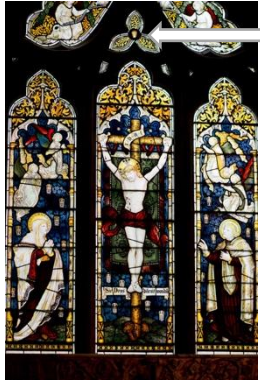
6 EAGLE

The eagle is a lectern **in front of the pews** and has a Holy Bible on it. Eagles are thought to be the bird that can fly the highest and so nearest to the heavens. Sometimes the eagle is a symbol for St. John the Baptist.

7 ORGAN

There are **23** pipes and they are made of spotted metal. This is a mixture of lead and tin and the spots develop on cooling because lead and tin have different melting points. The organ was originally installed in 1867 and was enlarged and moved in 1920 in memory of a young pilot, **Cuthbert Rowden M.C.**, killed in the First World War. It was moved again in **2004** in memory of Jonathan Wells who died in **1999**.

8 EAST WINDOW



Wheat sheaf



Wheat sheaf with tower

There is a **wheat sheaf with a tower superimposed on it**. After the death of C. E. Kempe, his cousin Walter Tower took over the business and added his mark, a picture of a tower. The feathers of the angel wings might have come from a **peacock**. Peacocks are also typically used symbols of the glass designer Kempe and can be seen in other churches.

9 PILLARS

No, the pillars are not all the same shape. Most of the pillars are **octagonal**, but one is **round or cylindrical** with what are called trumpet scallops. When the Church was rebuilt in Victorian times some of the old stones were re-used. Some of the pillars and the arch to the front door are from the old Church and so are round, the shape that was fashionable when it was first built. The marks of the axes can be seen around the front door arch. Later, chisels were used.

10 ANGEL

She is holding a **flower**.



11 MORTUARY CHAPEL

Charles Somers Cocks was born on 14th July **1819** and died on 26th September **1883**. He was **64** when he died. The tomb was made by J.E. Boehm.

12 WAR MEMORIAL

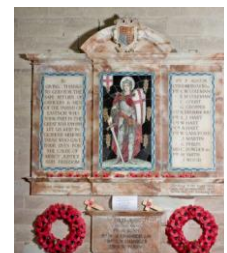
First World (or Great) War **1914-1919**

Second World War **1939-1945**

16 men died in the First World War

4 men died in the Second World War

Three brothers from the Hart family were killed and two brothers from the Coleman family.



13 TOWER

There are **6 ropes**, one for each bell and one that switches off the clock chimes whilst the bells are being rung.

The ropes have a fluffy part to make it easier to grip them.

On 30th March 2016 a peal of **5040** Plain Bob Minor was rung.

It took **2 hours 38 minutes**.

