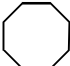



YOUR NAME

Start the trail at the grey arrow
Follow the numbers from 1-14.

1 FONT

How many sides does it have? _____
Is it a Octagon or Hexagon?

What  is it  used for?



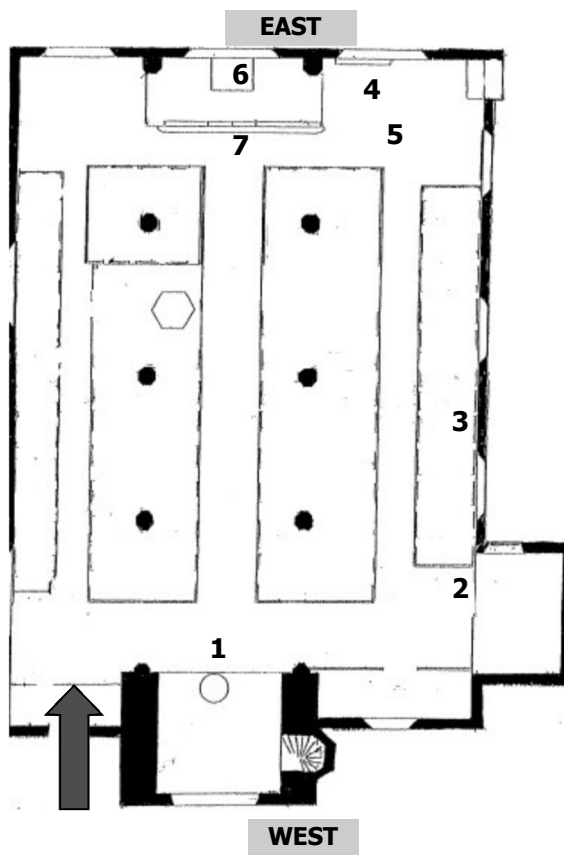
7 ALTAR RAIL

How many arches are there under the rail?

In whose memory was the rail given?

2 HATCHMENT

What is on the corners of the Hatchment?



6 EAST WINDOW

What are the names of the four saints shown in the window?

Draw a picture of Saint Petroc.

3 ROYAL ARMS

What are the animals?



L _ _ _ _

U _ _ _ _ _

4 MEMORIAL

What is the family name?

How many Brasses are part of the Memorial?

When did Edward die?

5 MEMORIAL STONE

Which member of the Roope family was awarded a VC?

G _ _ _ _ _

B _ _ _ _ _

What does VC stand for?

V _ _ _ _ _

C _ _ _ _ _

What was the name of his ship?

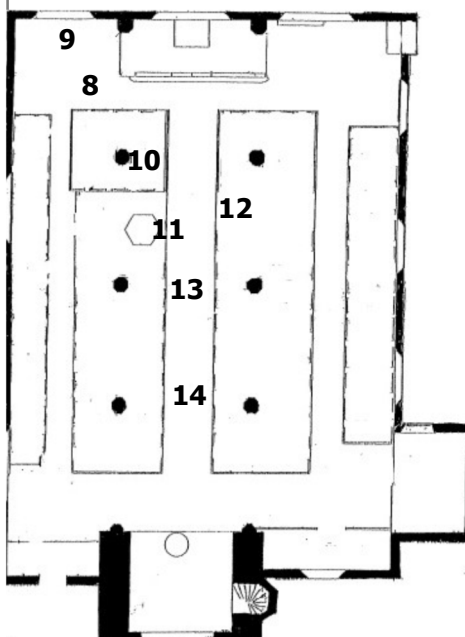
H. M. S.

G _ _ _ _ _

8 GLUBB MEMORIAL STONE

What were the names and ages of the three children of John Matthew Glubb?

EAST



9 NEWMAN WINDOW

Draw the missing chevron in the coat of arms.



10 MUSICAL INSTRUMENTS

How many instruments can you find?

Name these instruments.

11 PULPIT

What is the date on the Pulpit?

Who uses the Pulpit?

Why is it so high?



12 LECTERN

What is the book on the Lectern?

H _ _ _ B _ _ _ _

What is the Lectern made of?

Metal _ _

Wood _ _

Stone _ _



13 CANDLE HOLDERS

How many are there?

Why do you think there are so many?



14 MEMORIAL STONE

When did Mary die? _ _ _ _ _

Draw the skull and crossbones.

Children's Answers are in Bold. Further information is for interest and discussion.

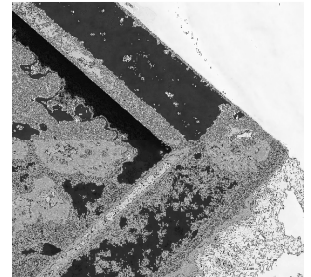
St Petrox Church at the mouth of the River Dart is the oldest of the three parish churches, the earliest reference being in 1192 when it is thought to have been referred to in a deed as the 'monastery of St Peter'. The church is dedicated to the sixth century Welsh prince Petroc who gave up his royal status to lead a religious life.

Believed to have provided a light at the harbour entrance, as well as being for the use of residents in South Town (between Bayards Cove and the harbour mouth), the church was at one time part of the neighbouring parish of Stoke Fleming.



1. FONT. The Font has **eight sides**. It is an **octagon**. **It is used when someone is baptised or christened.** It is not known from where it came although it is said that it lay in the churchyard for some years but was observed in use in 1845. The palmette decoration which is a stylized palm leaf used as a decorative element, notably in Persian rugs and in classical moldings, reliefs, frescoes, and vase paintings. is usually ascribed to the 12th century.

2. HATCHMENT. A **skull** is on the corners of the Hatchment. A hatchment is a diamond-shaped board made of wood or wood and canvas and bears the arms, crest or motto of a deceased person. Hatchments were carried in front of funeral processions to the church, and afterwards hung on the gate of the deceased person's house. After it had been hung on the gate for several months, it was taken down and hung in the church.



3. ROYAL ARMS.



The animals are the **Lion** and the **Unicorn**. The Royal Arms are those of Charles II (1630-1685). The Royal Arms were used to symbolise the King's authority and, after Henry VIII became Supreme Head of the Church of England in 1534, they began to appear in churches representing the connection between the monarch and the church.

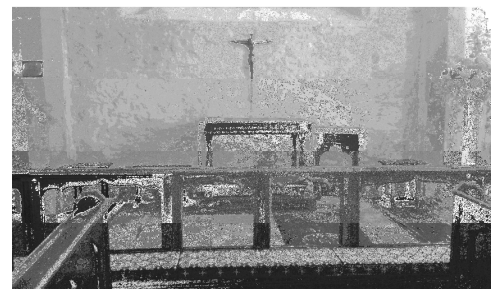
4. MEMORIAL. The family name is **Rooke**. There are **three** brasses. Edward Rooke died on **2nd June 1689**

5. MEMORIAL STONE. **Gerard Broadmead Rooke** was awarded a VC. VC stands for **Victoria Cross**, a medal awarded for bravery. His ship was the destroyer **HMS Glowworm**. On 8th April 1940 the ship, alone and outgunned, took on the German Heavy Cruiser Admiral Von Hipper and her destroyer escorts.. Lieutenant Commander Rooke, the Commanding Officer, was killed in the action and posthumously awarded the VC in recognition of his great valour.

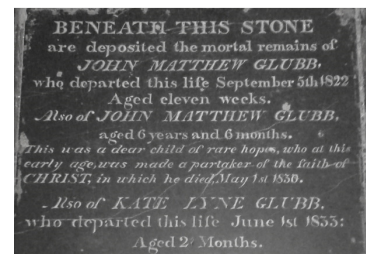


6. EAST WINDOW. The names of the four Saints are **St Peter, St George, ST Petroc and St Paul**. The stained glass window was installed in 1927 in memory of George Parker Bidder, the celebrated engineer and mathematician who at one time lived just along the road in Warfleet.

7. ALTAR RAIL. There are **six** arches under the altar rail. The rail was given in memory of Grace Bartlett who died on 29th May 1955. The Altar is the focal point of the church and is where the Christian act of Eucharist (Holy Communion or Mass) is performed. It is also called "The Lord's Table", "The Holy Table" or "The Communion Table".



8. GLUBB MEMORIAL STONE. The names and ages of the three children of J M Glubb are **John Matthew Glubb 11 weeks, John Matthew Glubb 6 years & 6 months** and **Kate Lyne Glubb 21 months**. J M Glubb was a Minister of the Parish. The memorial marks the spot where the children were interred by their parents on leaving the Parish in 1836 after more than 15 years in residence.



9. NEWMAN WINDOW



The Newman window to the left of the Altar is dedicated to the ancestors of the famous Newman family who are still living in the area and own land around Blackpool Sands, including the beach. The Newmans were ship owners and they traded goods all over the world.

The heraldic chevron is an inverted V shape and the name itself is derived directly from the French word 'chevron', a rafter of a roof.

This chevron is gold-coloured which in heraldry is called Or, blue is called Azure, red is Jules, black is Sable, green is Vert, and purple is Purpure,

10. MUSICAL INSTRUMENTS

There are two musical instruments in the Church, a piano and an organ.

11. PULPIT

The fine oak pulpit contains the date **1641** among the carvings.

The preacher uses the pulpit although the narrow entrance door and the two steps can present him with a challenge.

It is high **so that the congregation can see him easily**.



12. LECTERN

The book on the Lectern is **The Holy Bible**. The Lectern is made of **metal**. Lectern is another name for a bookstand to hold The Holy Bible or The Lectionary from which the lessons are read. The Holy Bible, the inspired writing of all Christian Churches, is divided into The Old Testament, largely inherited from the Jewish scriptures, and the New Testament written since the death of Christ.

13. CANDLE HOLDERS

There are **16** candle holders in the church. There are so many as until the late 1990's the church had **no electricity** except for the electric organ an entrance light to the bell chamber, and the candles were needed for lighting the church.

The candle holders are called torcheres and were made by Norman Simcox. Each torchere holds seven oil-filled candles.

14. MEMORIAL STONE

The Memorial stone in the central aisle is in memory of Mary Hodge who died on **7th August 1692**.

The skull and crossbones design originates in the Late Middle Ages as a symbol of death and especially as a memento mori (a reminder of mortality) on tombstones.

The skull and crossbones could also be found on the flag used by pirates in the Elizabethan period and were designed to threaten, intimidate, and spread fear and dread amongst all that encountered the pirate.

