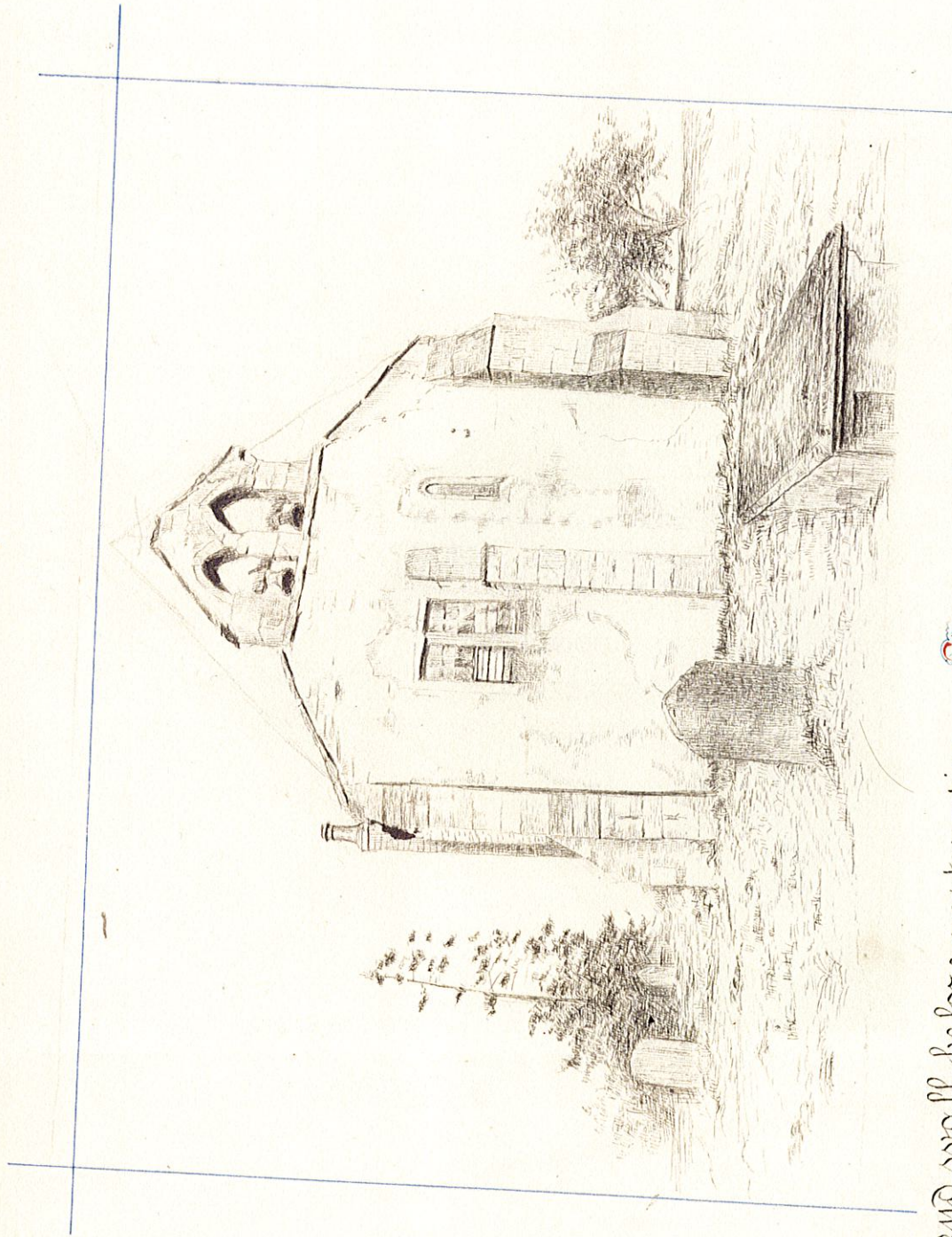
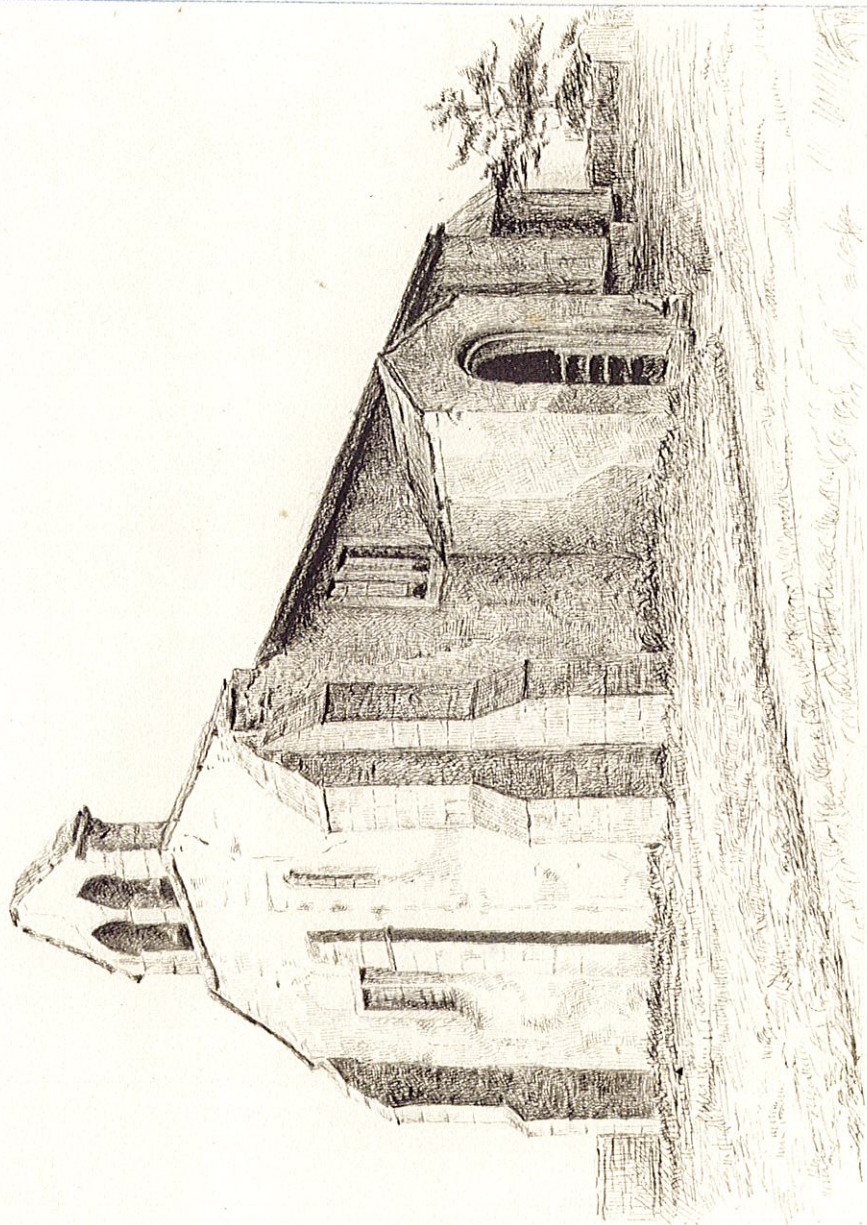


Old East end wall which was rebuilt, being too ruinous to stand **T**he buttresses are quite modern **T**he window has been re-set in the new East wall

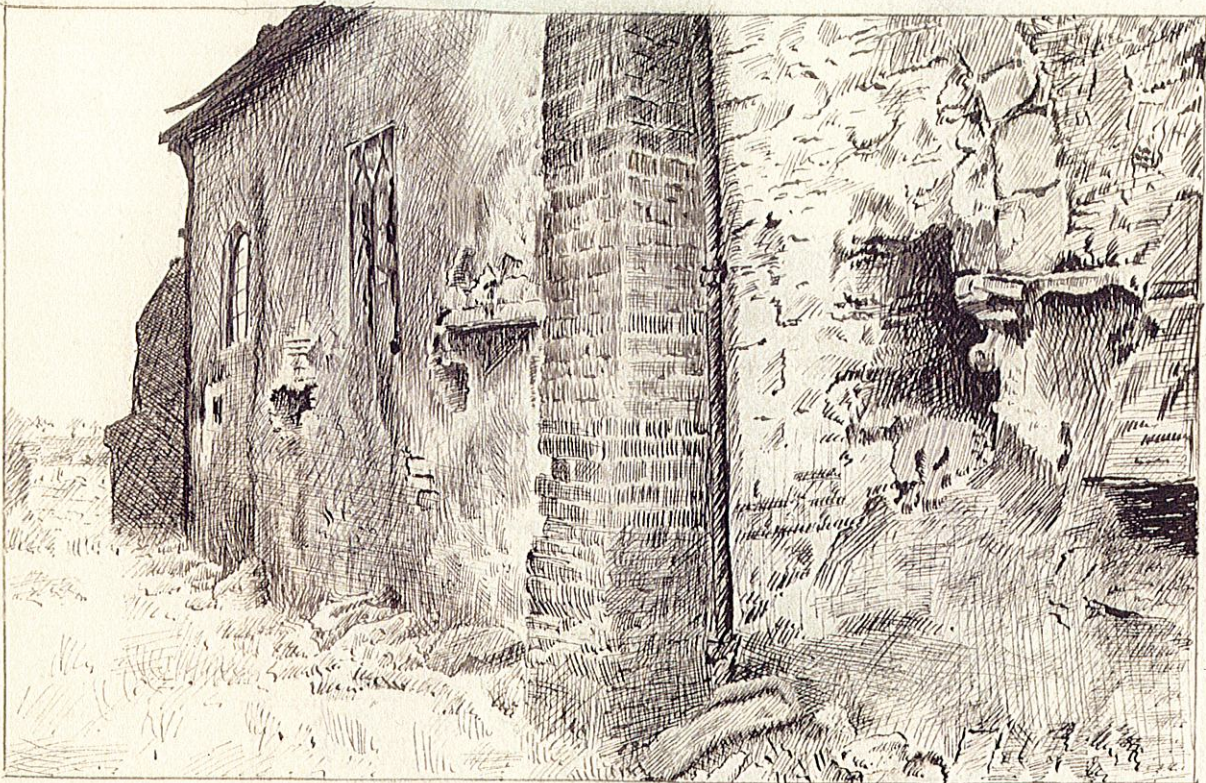


West end wall before restoration. See page 67 for description.

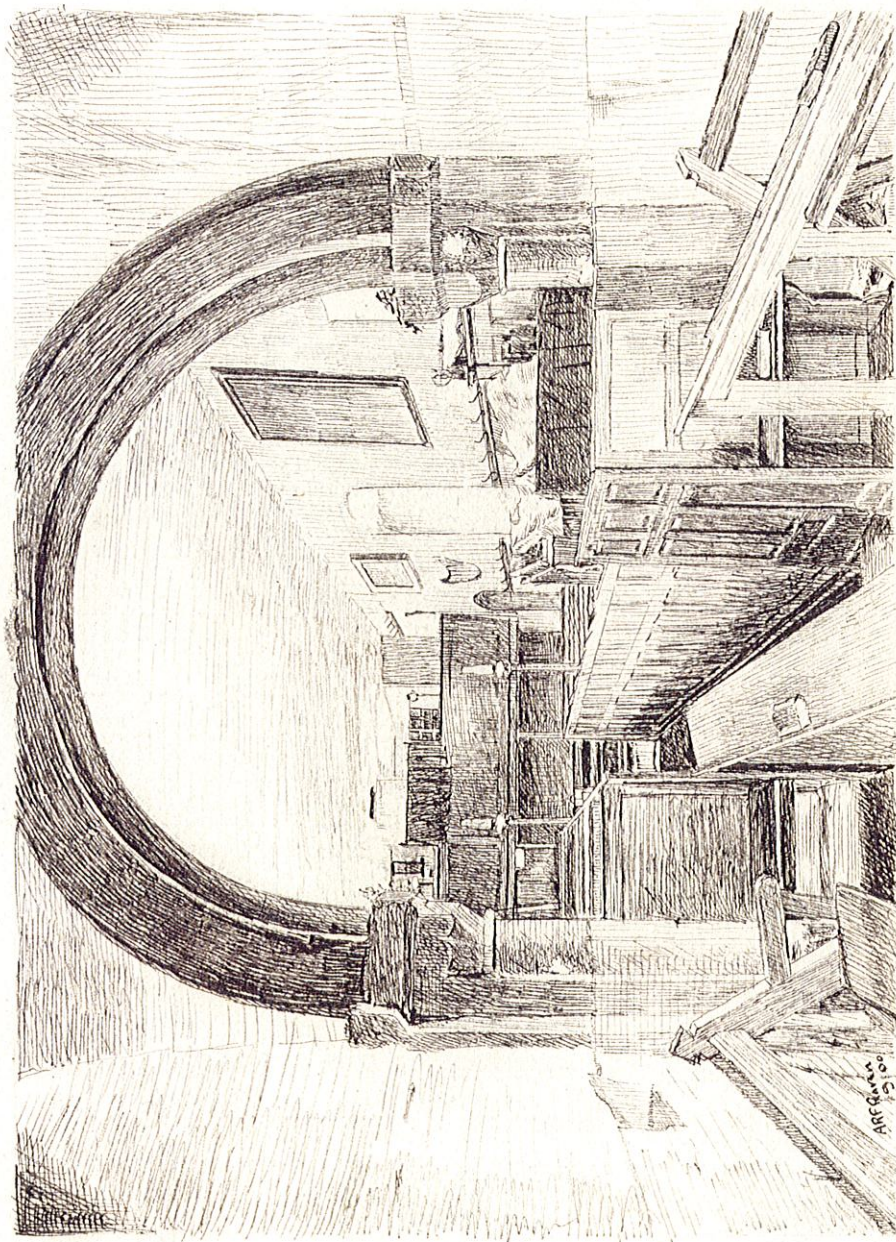
description
Page 67



Before restoration South side and West end **F**or further description see page



North wall, shewing four holes made by M^r Hodgson
 Fowler disclosing capitals of hidden pillars. The brick
 chimney, built some 30 years before to carry smoke from
 stove inside church, hides the old North doorway from our
 view. The XIVth century window is within the middle
 arch. Both window and doorway were re-set in the
 new aisle



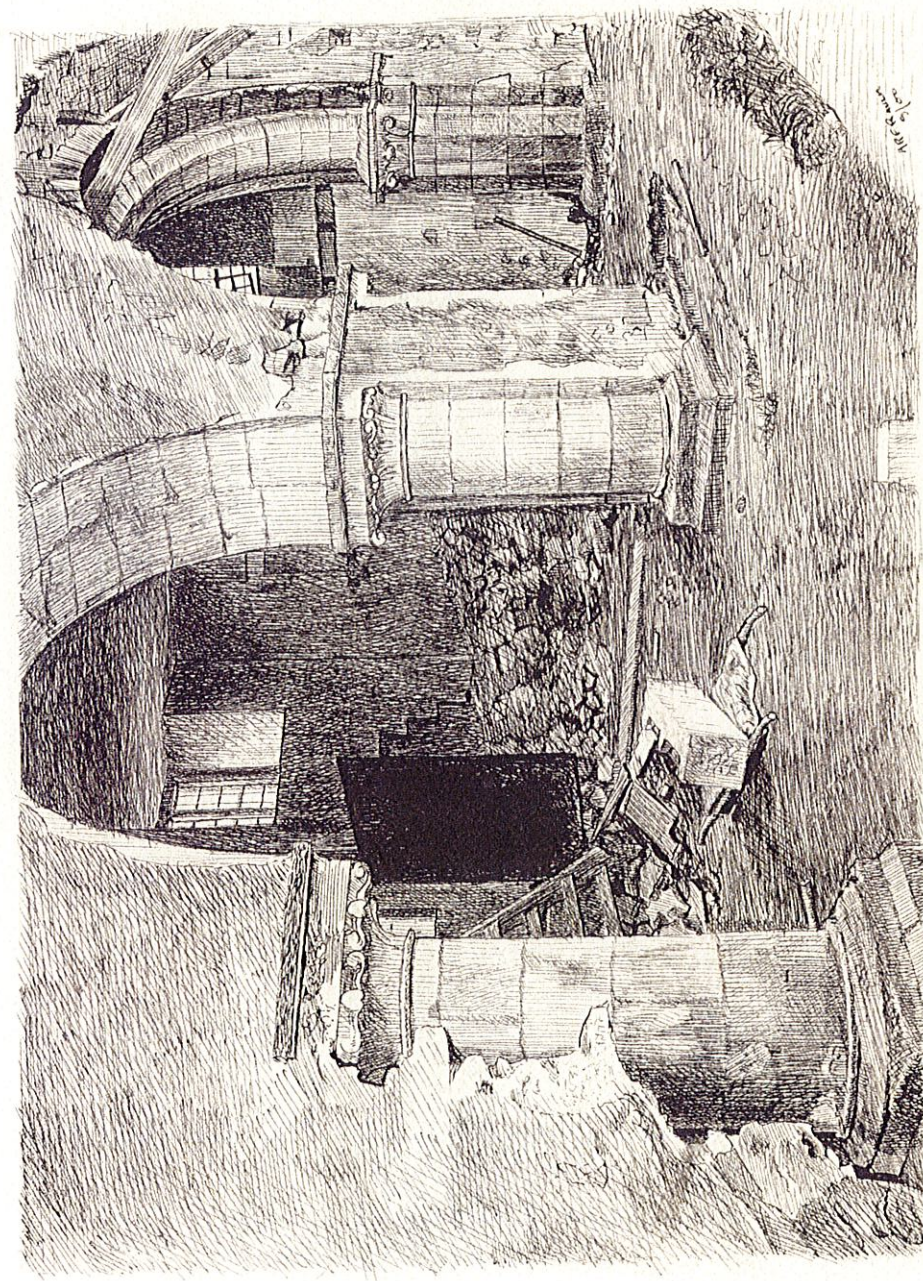
1 Old interior, looking West. The drawing of the gallery at the West end is not very distinct. The arcade subsequently discovered is hidden within the North wall. The windows between the two boards on the North wall is the old XIVth Century windows, now reset in North aisle.



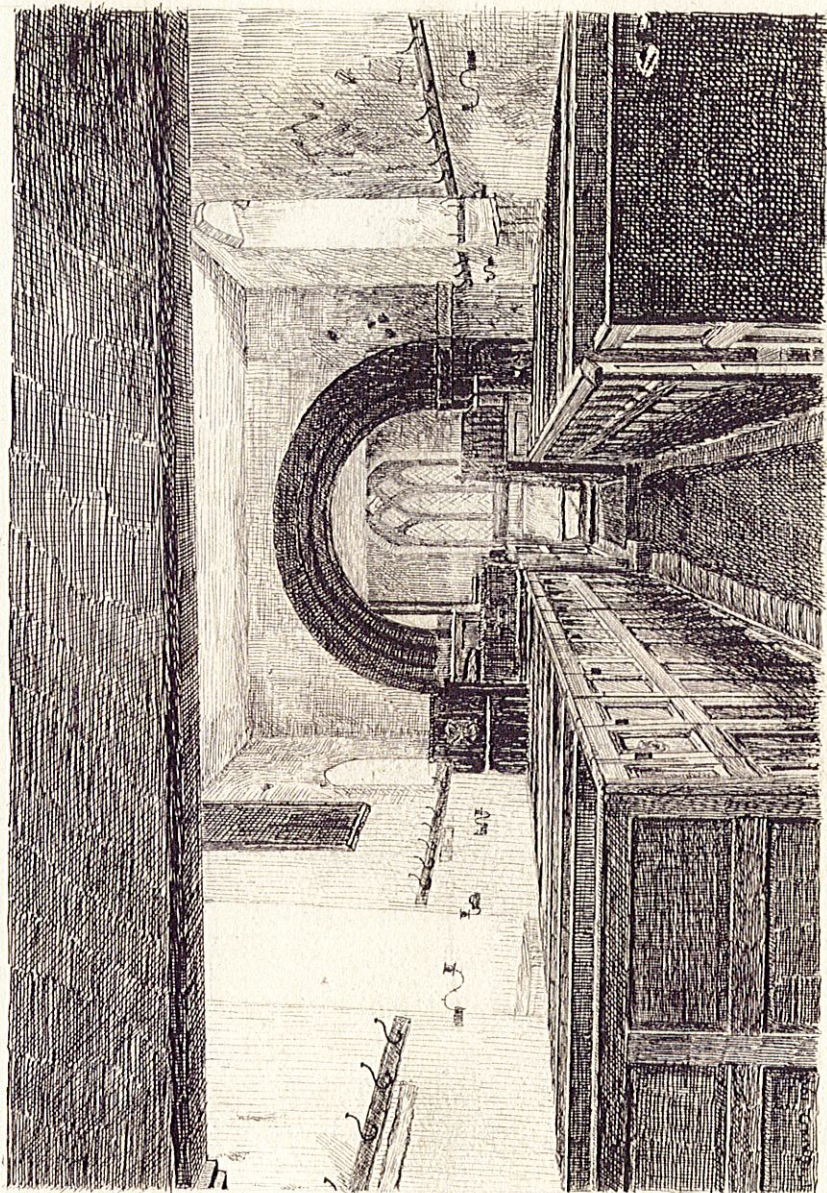
South doorway, drawn after removal of porch
during restoration For description see page 73.



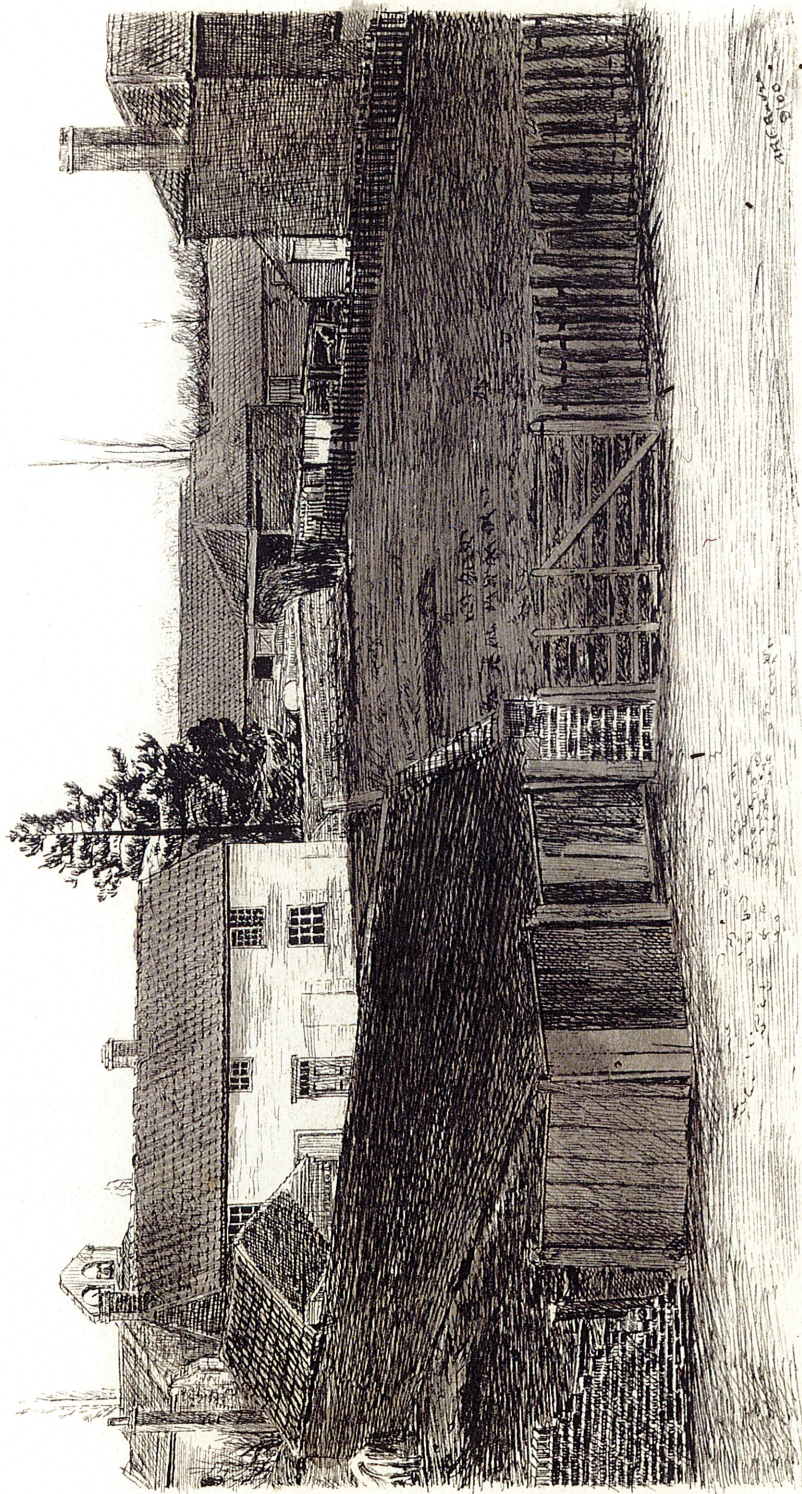
Interior after removal of gallery and interior fittings, and after the rubble which filled up the hidden arches had been removed from two of them. Observe the old window on left, with top hidden by plaster; also the square window cut to light the gallery doubtless destroying an ancient window similar to that on the left




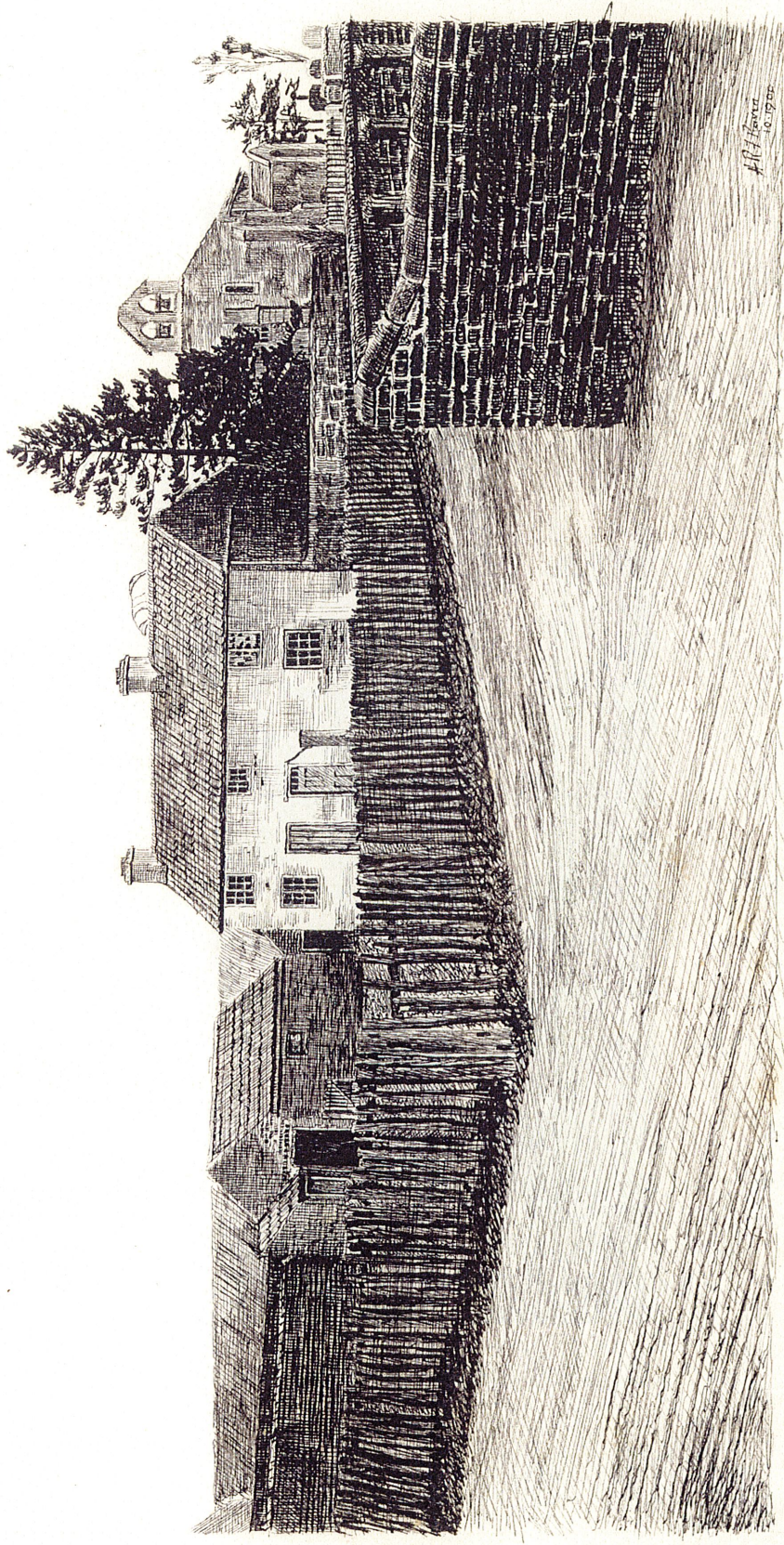
Outside view of arches. after the rubble which blocked them up, had been removed from two of them, the third arch being still undisturbed



Church before restoration **I**nterior looking East **T**he top of the East window is hidden by the plaster ceiling **T**he old XIVth century windows are seen on the North and South sides **T**he South side is not altered by the restoration **I**n the North wall is the hidden arcade **T**he carving on the chancel arch is hidden by plaster and colourwash which has been since taken off **S**ee picture **Pl. 13.**



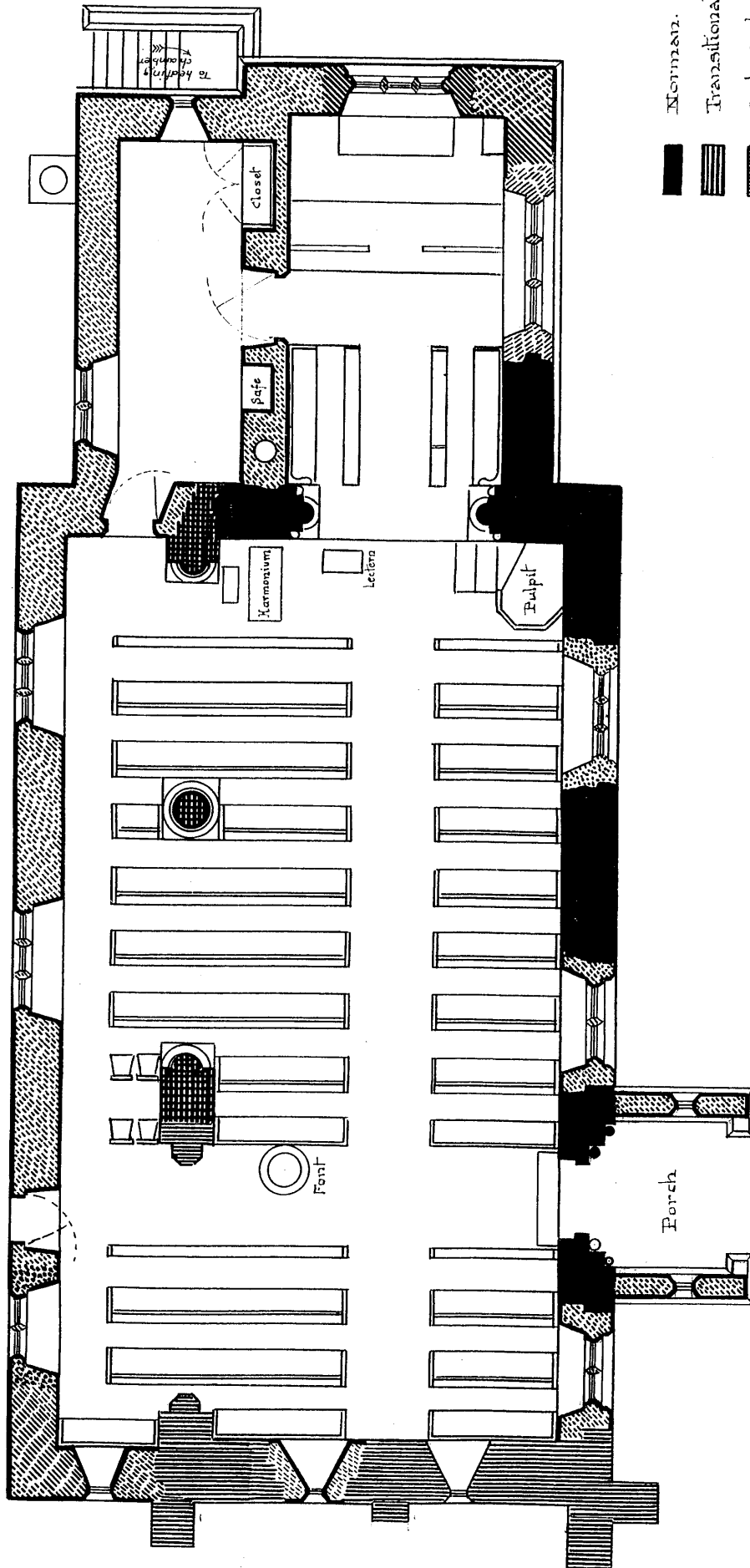
 Old Churchyard viewed from the North West, before the restoration
of the church



A.H. Fenn
10.17.00

Old Churchyard viewed from South West before restoration of the Church

S. Helen's, Austerfield.
as Restored 1898.



- Norman.
- Transitional.
- Early Early English.
- Late Early English.
- Decorated.
- Perpendicular.
- Modern.



C. Hodgson Fowler, F.S.A.
 Architect

S. Helen's, Austerfield
before Restoration - 1897.

